

1.368 ACRE  
ANITA SCHWARTZ  
DOC. 201900436  
O.P.R.B.C.T.

10.14 ACRES  
IVAN RAMIREZ GONZALES  
DOC. 202122501  
O.P.R.B.C.T.

10.51 ACRES  
OSCAR E. CONEJO  
RODRIGUEZ & ALEXIS A.  
CONEJO RODRIGUEZ  
DOC. NO. 202122487  
O.P.R.B.C.T.

0.07 ACRE ADDITIONAL  
R.O.W. HEREBY DEDICATED

9.88 ACRE  
BETTY JEAN SHUTZ  
VOL. 381, PG. 591  
O.P.R.B.C.T.

0.12 ACRE ADDITIONAL  
R.O.W. HEREBY DEDICATED

9.88 ACRE  
BETTY JEAN SHUTZ  
VOL. 381, PG. 591  
O.P.R.B.C.T.

TRACT 10 - 10.710 AC  
WILLIAM JEROME GOSCH  
VOL. 1106, PG. 547  
O.P.R.B.C.T.

APPROXIMATE LOCATION OF  
F.E.M.A. ZONE "A" 100-YR  
FLOODPLAIN PER FIRM MAP  
PANEL # 48021C0525E  
EFFECTIVE JANUARY 19, 2006

LOT 16  
4.97 ACRES  
216,287 SQ. FT.

1.41 ACRES  
61,546 SQ. FT.  
DEVELOPABLE OUTSIDE  
FLOODPLAIN/SETBACKS

LOT 17  
4.98 ACRES  
217,085 SQ. FT.

1.38 ACRES  
60,186 SQ. FT.  
DEVELOPABLE OUTSIDE  
FLOODPLAIN/SETBACKS

LOT 18  
5.01 ACRES  
218,075 SQ. FT.

1.37 ACRES  
(59,471 SQ. FT.)  
DEVELOPABLE OUTSIDE  
FLOODPLAIN/SETBACKS

LOT 19  
5.00 ACRES  
217,592 SQ. FT.

1.34 ACRES  
(58,355 SQ. FT.)  
DEVELOPABLE OUTSIDE  
FLOODPLAIN/SETBACKS

LOT 20  
4.97 ACRES  
216,619 SQ. FT.

1.30 ACRES  
(56,531 SQ. FT.)  
DEVELOPABLE OUTSIDE  
FLOODPLAIN/SETBACKS

LOT 21  
5.01 ACRES  
218,216 SQ. FT.

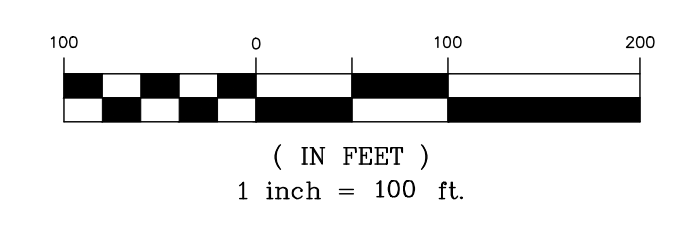
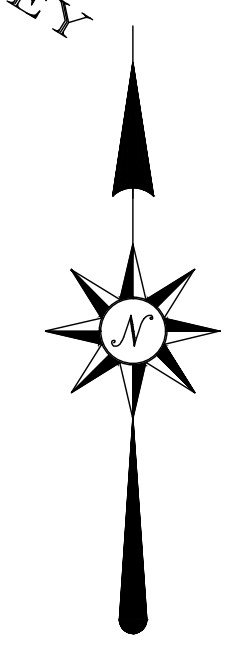
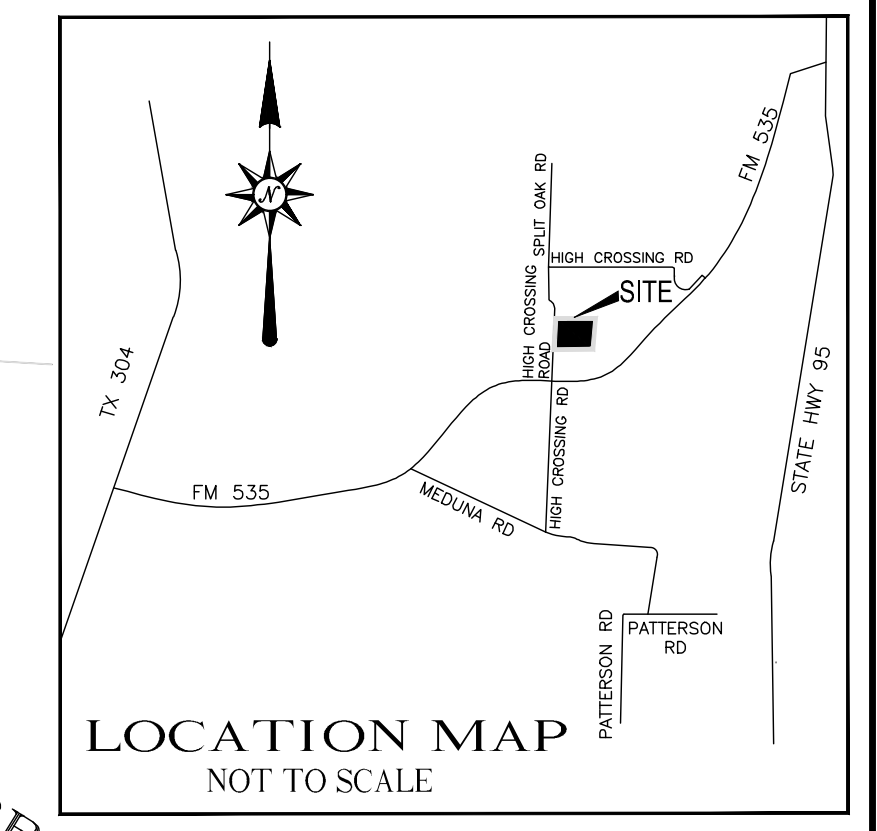
1.23 ACRES  
(53,437 SQ. FT.)  
DEVELOPABLE OUTSIDE  
FLOODPLAIN/SETBACKS

JOHN GARRETT SURVEY  
ABSTRACT 182

10.01 ACRES  
HIGH CROSSING RANCH  
PARTNERS, LP  
DOC. NO. 202115150

10.02 ACRES  
CECILIA RUIZ & FEDERICO  
CORDERO RODRIGUEZ  
DOC. NO. 202202377

10.04 ACRES  
DANIEL WILLIAM MCDONALD &  
JACALYN LANETTE MCDONALD  
DOC. NO. 202122508



k:\21003021 - high crossing ranch\dwg\survey\plots\21003021 field survey s platted lots.dwg Savedate: 4/27/2022 2:15 PM Plotdate: 4/27/2022 2:31 PM

DR. JBW	CH. RG	DATE
P.M. RG		APRIL 2022
CAD FILE: 21003021 FIELD SURVEY S PLATTED LOTS.DWG		
JOB	21001659	
SHEET NO.		
1 OF 1		
REVISIONS		

**PLATTED LOTS**

**HIGH CROSSING RANCH &  
RANCHES AT HIGH CROSSING**

OUT OF THE AUSTIN COUNTY ONE LEAGUE SURVEY  
LAMPASAS, COUNTY TEXAS

PROJECT:

**ATWELL**  
www.atwell-group.com  
805 LAS CIMAS PARKWAY, SUITE 310  
AUSTIN, TX 78746  
512.904.0505  
TBPE LS 10193726